

Data, Stocks and MSY?

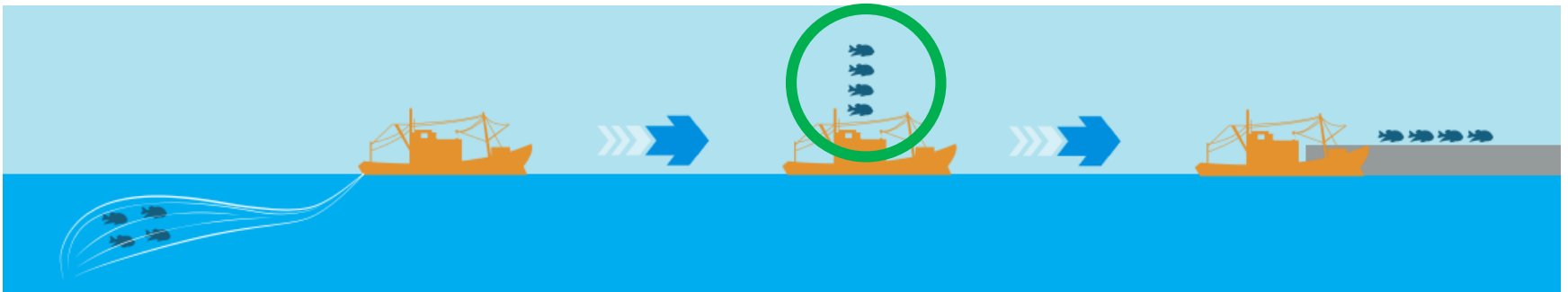
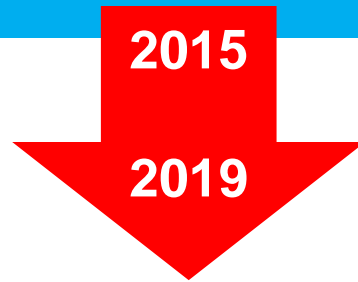
Lisa Borges



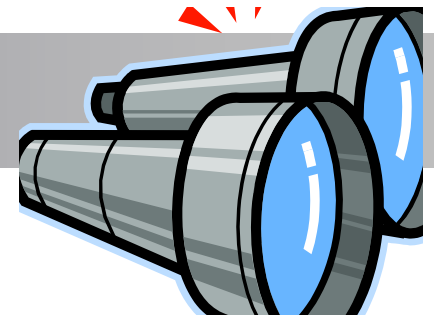
**Strategies for the gradual elimination
of discards in European fisheries**



What are the catches?



Discard sampling....



- × refusal to let observers on board
- × evidence of sampling levels decreased
- × discard sampling biased

Discard plans 2019-2021



21.12.2018

EN

Official Journal of the European Union

L 327/13

Article 4

Survivability exemption for common sole

1. In ICES division 7d, within six nautical miles of the coast but outside identified nursery areas, the survivability exemption provided for in Article 15(4)(b) of Regulation (EU) No 1380/2013 shall apply to catches of common sole (*Solea solea*) below the minimum conservation reference size made using otter trawl gears (gear codes: OTT, OTB, PTB, TBN, TB, PTB, OT, PT, TX) with a cod end mesh size of 80-99 mm, by vessels:

- having a maximum length of 10 meters and a maximum engine power of 221 kW; and
 - fishing in waters with the depth of 30 meters or less and with tow durations of no more than 1:30 hours.
2. When discarding common sole caught in cases referred to in paragraph 1, the common sole shall be released immediately.

Article 5

Survivability exemption for skates and rays

1. The survivability exemption provided for in Article 15(4)(b) of Regulation (EU) No 1380/2013 shall apply to total allowable catches of skates and rays (*Rajiformes*) caught by any fishing gear in the North Western Waters (ICES subareas 6 and 7).

2. Member States having a direct management interest shall submit, every year as soon as possible before 31 May, additional scientific information supporting the exemption laid down in paragraph 1. The Scientific, Technical and Economic Committee for Fisheries (STECF) shall assess the provided scientific information before 1 August every year.

3. The exemption set out in paragraph 1 shall apply to Cuckoo ray until 31 December 2019. Member States having a direct management interest shall submit as soon as possible before 31 May 2019, additional scientific information supporting that exemption. The Scientific, Technical and Economic Committee for Fisheries (STECF) shall assess the provided scientific information before 1 August 2019.

4. When discarding skates and rays caught in cases referred to in paragraph 1, the skates and rays shall be released immediately and below the sea surface.

Article 6

Survivability exemption for plaice

1. The survivability exemption provided for in Article 15(4)(b) of Regulation (EU) No 1380/2013 shall apply to:

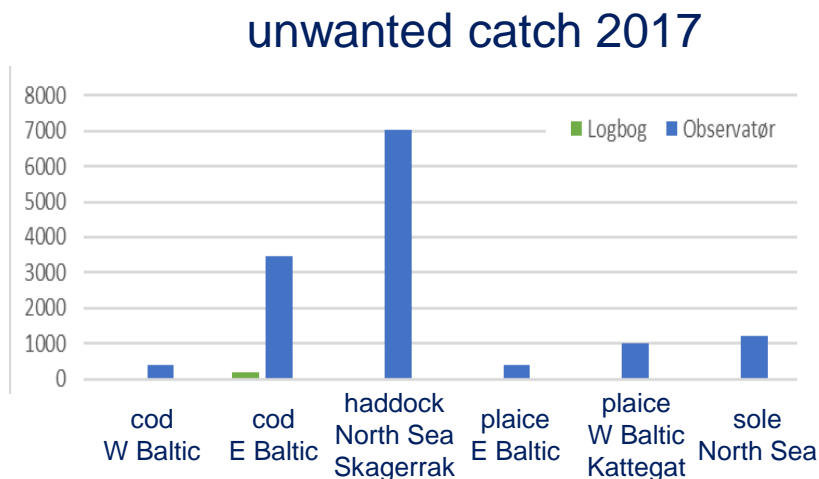
- plaice (*Pleuronectes platessa*) caught in ICES divisions 7d, 7e, 7f and 7g with trammel nets;
- plaice (*Pleuronectes platessa*) caught in ICES divisions 7d, 7e, 7f and 7g with otter trawls;
- plaice (*Pleuronectes platessa*) caught in ICES divisions 7a-7k by vessels having a maximum engine greater than 221 kW and using beam trawls (BT) fitted with a flip-up cone or benthic release panel;

De minimis exemptions

1. By way of derogation from Article 15(1) of Regulation (EU) No 1380/2013, the following quantities may be discarded pursuant to Article 15(5)(c) of that Regulation:

- for hake (*Merluccius merluccius*), up to a maximum of 6 % in 2019 of the total annual catches of that species by vessels using trawls and seines (gear codes: OTT, OTB, PTB, OT, PT, TBN, TBS, TX, SSC, SPR, TB, SDN, SX, SV) in ICES subareas 8 and 9;
- for common sole (*Solea solea*), up to a maximum of 5 % of the total annual catches of that species by vessels using beam trawl and bottom trawls (gear codes: OTB, OTT, PTB, TBN, TBS, TBB, OT, PT and TX) in ICES divisions 8a and 8b;
- for common sole (*Solea solea*), up to a maximum of 3 % of the total annual catches of that species by vessels using trammel nets and gillnets (gear codes: GNS, GN, GND, GNC, GTN, GTR and GEN) in ICES divisions 8a and 8b;
- for alfontinos (*Beryx spp.*), up to a maximum of 5 % of the total annual catches of that species by vessels using hooks and lines (gear codes: LHP, LHM, LLS, LLD) in ICES subarea 10;
- for great forkbeard (*Phycis blennoides*), up to a maximum of 3 % of the total annual catches of that species by vessels using hooks and lines (gear codes: LHP, LHM, LLS, LLD) in ICES subarea 10;
- for horse mackerel (*Trachurus spp.*), up to a maximum of 7 % in 2019 of the total annual catches of that species by vessels using beam trawl, bottom trawls and seines (gear codes: OTB, OTT, PTB, TBN, TBS, TBB, OT, PT, TX, SSC, SPR, SDN, SX, SV) in ICES subareas 8 and 9;
- for horse mackerel (*Trachurus spp.*), up to a maximum of 3 % in 2019 of the total annual catches of that species by vessels using gillnets (gear codes: GNS, GND, GNC, GTR, GTN) in ICES subareas 8, 9 and 10 and CECAF areas 34.1.1, 34.1.2, 34.2.0;
- for mackerel (*Scomber scombrus*), up to a maximum of 7 % in 2019 of the total annual catches of that species by vessels using beam trawl, bottom trawls and seines (gear codes: OTB, OTT, PTB, TBN, TBS, TBB, OT, PT, TX, SSC, SPR, SDN, SX, SV) in ICES subareas 8 and 9;
- for mackerel (*Scomber scombrus*), up to a maximum of 3 % in 2019 of the total annual catches of that species by vessels using gillnets (gear codes: GNS, GND, GNC, GTR, GTN) in ICES subareas 8, 9 and 10 and CECAF areas 34.1.1, 34.1.2, 34.2.0;
- for anchovy (*Engraulis encrasicolus*), up to a maximum of 7 % in 2019 of the total annual catches of that species by vessels using beam trawl, bottom trawls and seines (gear codes: OTB, OTT, PTB, TBN, TBS, TBB, OT, PT, TX, SSC, SPR, SDN, SX, SV) in ICES subareas 8 and 9;

Discard data....



- × discrepancy between discard rates
- × \neq discards through LO exemptions
- × decrease discard knowledge

Assessments & advice

- Catch advice
- Below Minimum Size
- data more complex
- changes in data quality & uncertainty
- too early to detect, work in progress

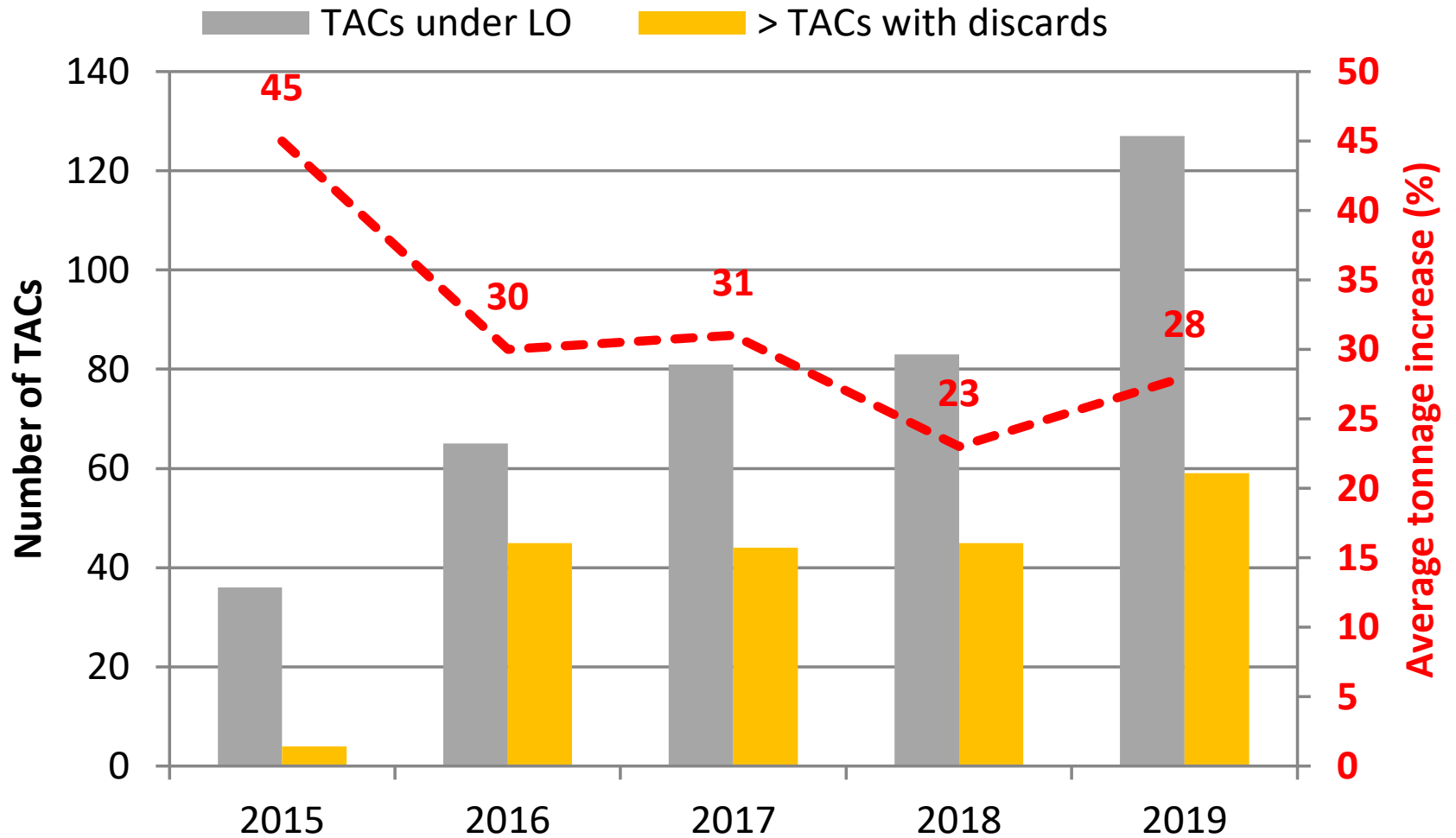


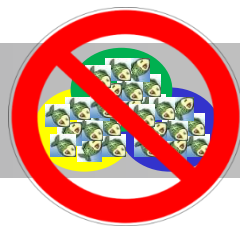
ICES
CIEM



data not available

TACs 2015-2019



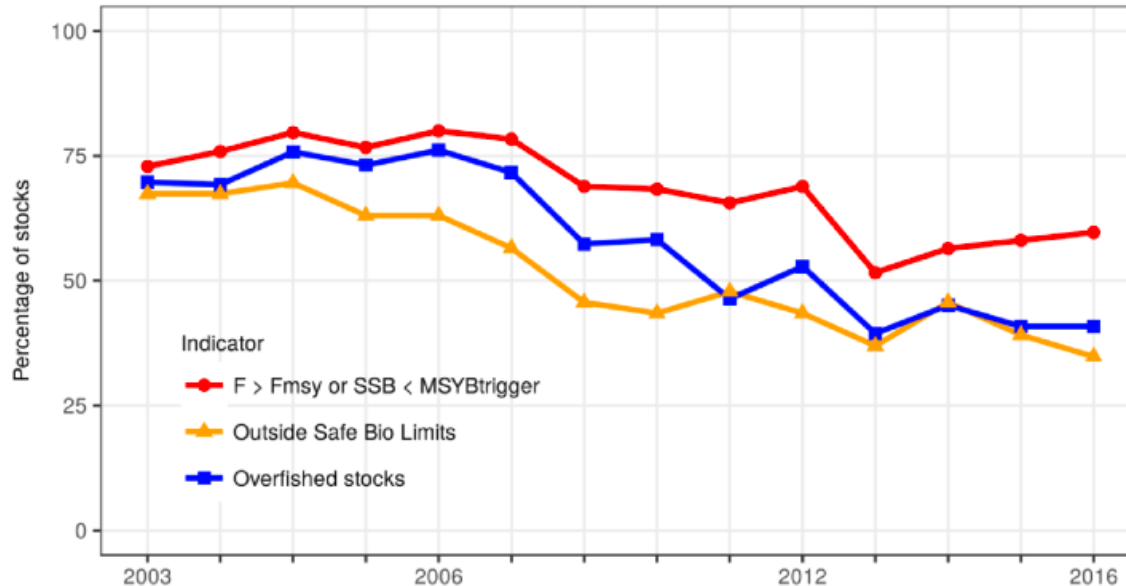


reducing unwanted catch and
changing fishing practices has been
minimal

due to a combination of policy
changes and insufficient monitoring
and control.

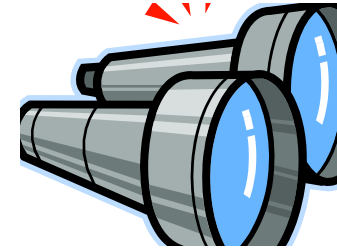
Maximum Sustainable Yield?

- STECF monitoring – reverse stock trend
- Significant increase of fishing mortality
- Changes in fishing patterns change MSY reference points



What are the catches?

✓ Increase at-sea sampling



✓ transparency & accountability

Thank You!

fish fix

for sustainable fisheries and aquaculture

